

Political ritual: California labor priorities and business ‘job killers’ again on a collision course

[Article originally appeared in www.calmatters.org]

By Dan Walters

An annual political ritual was repeated Wednesday when the California Chamber of Commerce released its 2024 list of “job killers” – nine bills that business executives consider to be the most burdensome.

“These proposals would add significant costs and burdens to California’s small businesses, creating an even more challenging business climate in our state,” chamber president Jennifer Barrera said in an accompanying statement.

Two hours later, the California Labor Federation released its list of high-priority legislation – 17 bills that it says will enhance the security and safety of California workers.

“Labor’s agenda is focused on empowering workers to shape the future of work, instead of allowing corporations and tech companies to continue playing by their own rules and amass wealth while workers struggle to get by,” the federation’s chief officer, Lorena Gonzalez, declared.

With that, two of the Capitol’s most influential interest groups renewed what has been one of California’s most enduring rivalries.

Somewhat surprisingly, only one bill appears on both lists. Senate Bill 1116, which would provide unemployment insurance benefits to striking workers, is nearly identical to legislation that was on the chamber’s 2023 job killer list and passed the Legislature only to be vetoed by Gov. Gavin Newsom.

In his veto, Newsom cited the Unemployment Insurance Fund’s huge deficit, upwards of \$20

billion borrowed from the federal government to cover jobless benefits during the COVID-19 pandemic. Employers are now paying higher payroll taxes to shrink the debt.

The labor federation says the new legislation, carried again by Sen. Anthony Portantino, a Glendale Democrat, “will help workers make ends meet and protect them from going into debt.” The chamber, on the other hand, says it would “effectively force employers to subsidize strikes at completely unrelated businesses,” and increase the unemployment fund’s debt.

The chamber’s list of targets includes another unemployment insurance measure, Senate Bill 1434, which would raise taxes on employers to beef up the unemployment fund, although the extent of the increase is not yet specified. The measure, carried by Sen. Maria Elena Durazo, a Los Angeles Democrat, would also create a new unemployment insurance benefit for workers who do not now qualify for them.

One reason for little overlap in the two initial priority lists is that many of the labor federation’s measures affect public employees, who are the majority of unionized workers in California, while the chamber concentrates on legislation affecting the private sector.

Since 1997, when the chamber launched its job killer campaign, it has defeated or neutralized about 90% of its targeted bills. In recent years, labor unions have gained more political clout as union-friendly Democrats captured about 75% of the Legislature’s seats.

While serving in the Assembly, Gonzalez was one of the most successful legislators in getting bills enacted despite being designated by the chamber as job killers. She left the Legislature



Supporters of SEIU Local 1000, rally in front of the Governor’s Mansion in Sacramento on June 8, 2023. Photo by Julie A Hotz for CalMatters

two years ago to become the labor federation’s top executive and the organization has since become a more aggressive Capitol gladiator.

Gonzalez cites legislation raising minimum wages for fast food workers and those in health care, increasing paid sick leave from three days a year to five and allowing legislative staffers to unionize, as union victories last year.

However, the chamber also had a fairly good record in 2023. It designated 19 bills as “job killers,” seven of which made it to Newsom, who

signed four of them and vetoed three, including the one granting unemployment insurance benefits to strikers.

The fast food and health care wage bills had been on the chamber’s 2023 list but were removed after being amended to reduce their impacts on employers.

SOURCE: <https://calmatters.org/commentary/2024/04/california-labor-priorities-clash-business/>

Construction Spending Slips 0.3 Percent in February as Declines in Private and Public Nonresidential Projects Outweigh Growth in Homebuilding

[Article originally appeared in www.agg.org]

Total construction spending declined from January to February to an annual rate of nearly \$2.1 trillion, but all categories posted year-over-year gains, according to an analysis of a new government report that the Associated General Contractors of America released today. Association officials noted, however, that the monthly decline could have been caused by changes in winter weather patterns, including heavy rain and snow in the west, during February.

“There were monthly decreases for nearly all types of nonresidential projects,” said Ken Simonson, the association’s chief economist. “But every spending segment increased from a year earlier, suggesting the current downturns may reflect short-term challenges such as severe

weather, not fading demand.”

Construction spending, not adjusted for inflation, totaled \$2.092 trillion at a seasonally adjusted annual rate in February. That figure is 0.3 percent below the downwardly revised January rate, but 10.7 percent above the February 2023 level.

Spending on private nonresidential construction decreased 0.9 percent in February but rose 12.6 percent from February 2023. The largest segments recorded similar patterns. Manufacturing construction slid 0.6 percent for the month but jumped 31.8 percent year-over-year. Commercial construction slumped 1.7 percent in February but ticked up 0.9 percent over 12 months. Investment in power, oil, and gas projects declined 0.5 percent for the month but rose 6.9 percent year-over-year.

Public construction spending decreased 1.2 percent for the month but soared 16.8 percent from a year earlier. The largest public segment, highway and street construction, fell by 1.6 percent in February but was up 18.5 percent from February 2023. Public educational spending slumped 1.8 percent from January but climbed 15.4 percent year-over-year.

Spending on private residential construction gained 0.7 percent for the month and 6.3 percent year-over-year. Single-family construction climbed 1.4 percent from January, the tenth-straight increase. Spending on multifamily projects dipped 0.2 percent in February but remained 6.1 percent higher than a year earlier.

Association officials said the big jump in year-over-year public-sector investments in infrastructure and construction was good news for

the industry, but also cautioned that many firms continue to struggle to find enough workers to hire. They urged federal, state, and local officials to boost funding for construction education and training programs to help encourage more people to seek construction careers.

“It is in the public interest to make sure there are enough people available to keep pace with growing investments in infrastructure, manufacturing and clean energy,” said Jeffrey D. Shoaf, the association’s chief executive officer. “Investing in new construction education and training programs and creating a workable legal immigration process for skilled construction workers will help get key projects completed and provide another path to middle class prosperity for many workers.”

SOURCE: bit.ly/3vJ0dk1



CALIFORNIA SUB-BID REQUEST ADS

DESILVA GATES CONSTRUCTION

11555 Dublin Boulevard • P.O. Box 2909 • Dublin, CA 94568-2909
Phone: (925) 829-9220 / Fax: (925) 803-4263

Website: www.desilvagates.com

ESTIMATOR: DAVID CZECH and JACK SHEWMAKER
An Equal Opportunity/ Affirmative Action Employer

DeSilva Gates Construction (DGC) is preparing a bid as a Prime Contractor for the project listed below:

SR 99/SR 120 - CONSTRUCTION ON STATE HIGHWAYS IN SAN JOAQUIN COUNTY IN AND NEAR THE CITY OF MANTECA ON STATE ROUTE 99 BETWEEN 0.26 MILE SOUTH OF AUSTIN ROAD OVERCROSSING TO ROUTE 99/ 120 SEPARATION AND ON ROUTE 120 FROM UNION ROAD OVERCROSSING AND ROUTE 99/ 120 SEPARATION, EA 10-1M290, Disadvantaged Business Enterprise Goal Assigned is 23%

**OWNER: SAN JOAQUIN COUNCIL OF GOVERNMENTS – 555 East Weber Avenue, Stockton, CA 95202
BID DATE: APRIL 12, 2024 @ 2:00 P.M.**

DGC is soliciting quotations from certified Disadvantaged Business Enterprises, for the following types of work and supplies/ materials including but not limited to:

AC Dike, Biologist Consultant, Bridge, Clearing and Grubbing/Demolition, Cold Plane, Concrete Barrier, Construction Area Signs, Electrical, Emulsion Supplier, Erosion Control, Fencing, Landscaping, Metal Beam Guardrail, Minor Concrete, PCC Paving, Roadside Signs, Rumble Strip, Sign Structure, Slurry Seal, Striping, Survey/Staking, SWPPP Prep/Water Pollution Control Plan Prepare, Temporary Erosion Control, Testing, Traffic Control Systems, Underground, Vegetation Control, Well Drilling & Sealing, Trucking, Water Trucks, Street Sweeping, Hot Mix Asphalt (Type A) Material and Rubberized HMA (Gap Grade) Material.

Plans and specifications may be reviewed at our offices located at 11555 Dublin Boulevard, Dublin, CA or 3855 N Freeway Blvd Suite 100, Sacramento, CA 95834, or at your local Builders Exchange, or reviewed and downloaded from the dropbox site at https://www.dropbox.com/sh/5rvc1bwfbasgl9/AABrd0ba51_kN3GtAESfBUoa?dl=0 or from the Owner's site at www.dot.ca.gov/hq/esc/oe/weekly_ads/all_adv_projects.php

Fax your bid to (925) 803-4263 to the attention of Estimator David Czech and Jack Shewmaker. If you have questions for the Estimator, call at (925) 829-9220. When submitting any public works bid please include your DUNS number and DIR number. For questions regarding registration for DIR use the link at www.dir.ca.gov/Public-Works/PublicWorks.html

If you need DBE support services and assistance in obtaining bonding, lines of credit, insurance, necessary equipment, materials and/or supplies or related assistance or services, for this project call the Estimator at (925) 829-9220, or contact your local Small Business Development Center Network (<http://californiasbdc.org>) or contact the California Southwest Transportation Resource Center (www.transportation.gov/osdbu/SBTRCs). DGC is willing to breakout portions of work to increase the expectation of meeting the DBE goal.

At our discretion, 100% Payment and 100% Performance bonds may be required as a subcontract condition. This will be a PREVAILING WAGE JOB. DGC is an Equal Opportunity/Affirmative Action Employer.

DESILVA GATES CONSTRUCTION

11555 Dublin Boulevard • P.O. Box 2909 • Dublin, CA 94568-2909
Phone: (925) 829-9220 / Fax: (925) 803-4263

Website: www.desilvagates.com

ESTIMATOR: PAUL BRIZUELA
An Equal Opportunity/ Affirmative Action Employer

DeSilva Gates Construction (DGC) is preparing a bid as a Prime Contractor for the project listed below:

AUBURN BOULEVARD COMPELTE STREETS PROJECT-PHASE 2 REBID

Federal Project No. CML 5475 (038)

Disadvantaged Business Enterprise Goal Assigned is 23%

OWNER: CITY OF CITRUS HEIGHTS – 6360 Fountain Square Drive, Citrus Heights, CA 95621

BID DATE: APRIL 10, 2024 @ 2:00 P.M.

DGC is soliciting quotations from certified Disadvantaged Business Enterprises, for the following types of work and supplies/ materials including but not limited to:

Adjust Iron, Clearing and Grubbing/Demolition, Cold Plane, Electrical, Emulsion Supplier, Fencing, Landscaping, Lead Compliance Plan, Minor Concrete, Minor Concrete Structure, Roadside Signs, Sawcutting, Sign Structure, Slurry Seal, Striping, Survey/Staking, SWPPP Prep/Water Pollution Control Plan Prepare, Traffic Control Systems, Tree Removal,/Trimming, Underground, Trucking, Class 2 Aggregate Base Material and Hot Mix Asphalt (Type A) Material.

Plans and specifications may be reviewed at our offices located at 11555 Dublin Boulevard, Dublin, CA or 3855 N Freeway Blvd Suite 100, Sacramento, CA 95834, or at your local Builders Exchange, or reviewed and downloaded from the dropbox site at https://www.dropbox.com/sh/5rvc1bwfbasgl9/AABrd0ba51_kN3GtAESfBUoa?dl=0 or from the Owner's site at www.dot.ca.gov/hq/esc/oe/weekly_ads/all_adv_projects.php

Fax your bid to (925) 803-4263 to the attention of Estimator Paul Brizuela. If you have questions for the Estimator, call at (925) 829-9220. When submitting any public works bid please include your DUNS number and DIR number. For questions regarding registration for DIR use the link at www.dir.ca.gov/Public-Works/PublicWorks.html

If you need DBE support services and assistance in obtaining bonding, lines of credit, insurance, necessary equipment, materials and/or supplies or related assistance or services, for this project call the Estimator at (925) 829-9220, or contact your local Small Business Development Center Network (<http://californiasbdc.org>) or contact the California Southwest Transportation Resource Center (www.transportation.gov/osdbu/SBTRCs). DGC is willing to breakout portions of work to increase the expectation of meeting the DBE goal.

At our discretion, 100% Payment and 100% Performance bonds may be required as a subcontract condition. This will be a PREVAILING WAGE JOB. DGC is an Equal Opportunity/Affirmative Action Employer.

DESILVA GATES CONSTRUCTION

11555 Dublin Boulevard • P.O. Box 2909 • Dublin, CA 94568-2909
Phone: (925) 829-9220 / Fax: (925) 803-4263

Website: www.desilvagates.com

ESTIMATOR: VICTOR LE
An Equal Opportunity/ Affirmative Action Employer

DeSilva Gates Construction (DGC) is preparing a bid as a Prime Contractor for the project listed below:

WILLOW PASS ROAD REPAVING SAFE ROUTE TO TRANSIT (SR2T), CITY PROJECT NO. 2449 FEDERAL PROJECT NO. STPCML 5135(057) Disadvantaged Business Enterprise Goal Assigned is 22%

OWNER: CITY OF CONCORD – 1950 Parkside Drive, City of Concord

REVISED BID DATE: APRIL 10, 2024 @ 2:00 P.M.

DGC is soliciting quotations from certified Disadvantaged Business Enterprises, for the following types of work and supplies/ materials including but not limited to:

AC Dike, Adjust Iron, Clearing and Grubbing/Demolition, Cold Plane, Construction Area Sign, Crack Sealing, Electrical, Fencing, Cold-In Place, Landscaping, Minor Concrete, Striping, Survey/Staking, SWPPP Prep/Water Pollution Control Plan Prepare, Traffic Control Systems, Underground, Trucking, Water Trucks, Street Sweeping, Class 2 Aggregate Base Material, Hot Mix Asphalt (Type A) Material and Rubberized HMA (Gap Grade) Material.

Plans and specifications may be reviewed at our offices located at 11555 Dublin Boulevard, Dublin, CA or 3855 N Freeway Blvd Suite 100, Sacramento, CA 95834, or at your local Builders Exchange, or reviewed and downloaded from the dropbox site at https://www.dropbox.com/sh/5rvc1bwfbasgl9/AABrd0ba51_kN3GtAESfBUoa?dl=0 or from the Owner's site at www.dot.ca.gov/hq/esc/oe/weekly_ads/all_adv_projects.php

Fax your bid to (925) 803-4263 to the attention of Estimator Victor Le. If you have questions for the Estimator, call at (925) 829-9220. When submitting any public works bid please include your DUNS number and DIR number. For questions regarding registration for DIR use the link at www.dir.ca.gov/Public-Works/PublicWorks.html

If you need DBE support services and assistance in obtaining bonding, lines of credit, insurance, necessary equipment, materials and/or supplies or related assistance or services, for this project call the Estimator at (925) 829-9220, or contact your local Small Business Development Center Network (<http://californiasbdc.org>) or contact the California Southwest Transportation Resource Center (www.transportation.gov/osdbu/SBTRCs). DGC is willing to breakout portions of work to increase the expectation of meeting the DBE goal.

At our discretion, 100% Payment and 100% Performance bonds may be required as a subcontract condition. This will be a PREVAILING WAGE JOB. DGC is an Equal Opportunity/Affirmative Action Employer.



McCarthy Building Companies

515 S. Flower St | Ste. 3600 | Los Angeles, CA 90071 | 213-655-1100 | License #411173

Subcontractor Solicitation of Interest
Kenneth Hahn Hall of Administration – Base Isolation Seismic Retrofit
Los Angeles, CA

McCarthy Building Companies, Inc., working as the Construction Manager at Risk in conjunction with the Department of Public Works for Los Angeles County, is soliciting interest from qualified subcontractors to participate in the bidding for award phase of the project.

Project description: The Hall of Administration Base Isolation Seismic retrofit project consists of the installation of seismic isolators under the foundation of the existing building. Hydraulic jacks and temporary load-bearing shoring will be installed in phases to support and transfer the gravity loads from the existing columns/walls to new support foundations. Seismic strengthening of the superstructure using new concrete shear walls is required at select interior locations. These interior locations will require demolition and reconstruction. Select restrooms will receive ADA upgrades and elevators are to be modernized. A moat gap will be constructed around the building perimeter using earth-retention walls. Shoring and earthwork operations will require demolition and reconstruction of the existing site around the building. Underground utilities will be modified or replaced. This project will be performed at an active site where the building is occupied during typical work hours. Provisions of various sorts will be accommodated so as not to disrupt the occupants of the building.

Project Location: 500 West Temple Street, Los Angeles, CA 90012

Work categories include: Surveying, and Best Value Selection for Design-Build Elevators.

Key Subcontractor Qualifications: Design-Build experience for: Elevators.

Key Dates: Request for Proposals (RFP) issued to Subcontractors – 03/21/24 via Building Connected website; Proposals Due to McCarthy Building Companies – 4/19/24.

This project requires:

- Prevailing Wages
- Community Workforce Agreement (CWA)
- Contractor Controlled Insurance Program (CCIP)
- A 100% Performance and Payment Bond from an admitted surety upon award of contract for all trades.

McCarthy is an equal opportunity employer and encourages qualified Small Business and Minority Business participation. All qualified applicants will receive consideration for employment without regard to race, religion, sex, or national origin.

Please contact us if you have any questions regarding project specifics:

McCarthy Building Co, Inc.
Lando Madrigal - Sr. Preconstruction Manager
E-Mail: lmadrigal@mcCarthy.com

WE ARE AN EQUAL OPPORTUNITY EMPLOYER

SBE OUTREACH SERVICES

With 1.5 million businesses in our database, SBE is California's #1 source for diversity outreach.

Advertisements - Placed in the Small Business Exchange newspaper, SBE Today newsletter, and online at www.sbeinc.com

Faxed and Elast Solicitations - Targeted mailings sent to businesses per your criteria.

Telemarketing - Telephone follow-up calls that follow a script of 5 questions you create.

Computer Generated Reports - Will fit right into your proposal, along with a list of interested firms to contact.

Contact Info:

1160 Battery Street East, Suites #100, San Francisco, CA 94111

Email: sbe@sbeinc.com • Website: www.sbeinc.com

Phone: (415) 778-6250, (800) 800-8534

Fax: (415) 778-6255

Publisher of Small Business Exchange weekly newspaper



CALIFORNIA SUB-BID REQUEST ADS



Mountain Cascade Inc.
555 Exchange Court, Livermore, CA 94550
(925) 373-8370, Fax (925) 373-0940

Project: East of Hills Facilities Demolition & Improvements (Grizzly No. 1 & No. 2 Reservoirs, Castle Hill Reservoir, Castle Hill Regulator, Crest Radio Site, Castle Crest Rd. & Sydney Dr., Crest Pumping Plant, Danville Reservoir, Knife Reservoir No. 1 & Wiedmann Reservoir No. 1) Specification No. 2179
Owner: EBMUD

Revised Bid Date: April 24th, 2024 @1:30 p.m.

We are requesting quotes from all qualified DBE/WBE/MBE Subcontractors and Suppliers but not limited to: PRECAST MATERIALS, PIPESUPPLIERS, STEEL TANKS, MISC. METALS, CATHODIC PROTECTION, ENVIRONMENTAL DEMO, ELECTRICAL, FENCING, MASONRY, REINFORCING STEEL, STEEL PIPE, CRANE RENTAL, DOORS, ASBESTOS ABATEMENT, BATHROOM FIXTURES, BLDG. MASONRY, PUMPING PLANT ELECTRICAL/DRAINAGE PUMPING EQUIPMENT, DRYWALL, HVAC/MECHANICAL, PAINTINGS/COATINGS, ROOFING, B-DECKING, VALVES/WATER MAIN/TEMP FACILITIES.

Project Description:

The work includes but not limited to: Demo/Removal and Construction of reservoirs and steel tanks reservoirs in 5 locations in Contra Costa.

Engineers Estimate: \$21 - \$23 million

Project information, including plans & specifications can be found by contacting:
<http://www.ebmud.com/current-construction-bids>
estimating@mountaincascade.com

Please feel free to contact Mountain Cascade, Inc. at 925.373.8370 with any questions concerning bonding, insurance, lines of credit, and job overview. We look forward to your response.

Mountain Cascade Inc. is an Equal Opportunity Employer
California License # 422496

This is Part of a Good Faith Outreach. Your response is greatly appreciated



Mountain Cascade Inc.
555 Exchange Court, Livermore, CA 94550
(925) 373-8370, Fax (925) 373-0940

Project: Construction on State Highway in Yolo County Near Knights Landing from Sycamore Slough Bridge to County Line Road
Contract No. 03-3G0604

Owner: Caltrans

Bid Date: April 10th, 2024 @2:00 PM (ELECTRONIC BID)

DVBE Goal: 3%
SBE Goal: 5%

We are requesting quotes from all qualified DVBE/SBE Subcontractors and Suppliers but not limited to: AGGREGATES, ASPHALT, ASPHALT GRINDING, CHIPSEAL/SLURRY SEAL, CONSTRUCTION AREA SIGNS, GEOTECH ENGINEERS, STRIPING, SWPP PLAN ONLY, TRAFFIC CONTROL, TRUCKING.

Project Description:

The project includes, but not limited to, cold plane AC pavement, HMA and seal coat.

Engineers Estimate: : \$2,450,000

Plans and specs can be obtained at: <http://ppmoe.dot.ca.gov/des/oe/weekly-ads>

Or contact: estimating@mountaincascade.com

Please feel free to contact Mountain Cascade, Inc. at 925.373.8370 with any questions concerning bonding, insurance, lines of credit, and job overview. We look forward to your response.

Mountain Cascade Inc. is an Equal Opportunity Employer
California License # 422496

This is Part of a Good Faith Outreach. Your response is greatly appreciated



Mountain Cascade Inc.
555 Exchange Court, Livermore, CA 94550
(925) 373-8370, Fax (925) 373-0940

Project: North Davis Meadows Water Consolidation Project, North Davis Meadows CSA, CA
Owner: County of Yolo

Bid Date: April 18th, 2024 @2:00 p.m.

We are requesting quotes from all qualified DBE Subcontractors and Suppliers but not limited to:

AGGREGATES, ASPHALT, CONCRETE MATERIAL, PIPE SUPPLIERS, BORE & JACK, CATHODIC PROTECTION, CONCRETE FLATWORK, EROSION CONTROL, LANDSCAPING/IRRIGATION, SAWCUTTING, STRIPING, SURVEYING, SWPP PLAN ONLY, TRUCKING, VALVES/WATER MAIN/ TEMP FACILITIES.

Project Description:

The work includes but not limited to: installing 10,447 lf. of new potable water main piping with gate valves, air valves, blow-offs, bore & jack, water meters and backflow preventer.

Engineers Estimate: \$7 million

Project information, including plans & specifications can be found by contacting
<http://www.BidSync.com>
estimating@mountaincascade.com

Please feel free to contact Mountain Cascade, Inc. at 925.373.8370 with any questions concerning bonding, insurance, lines of credit, and job overview. We look forward to your response.

Mountain Cascade Inc. is an Equal Opportunity Employer
California License # 422496

This is Part of a Good Faith Outreach. Your response is greatly appreciated



Mountain Cascade Inc.
555 Exchange Court, Livermore, CA 94550
(925) 373-8370, Fax (925) 373-0940

Project: Construction on State Highway in Yolo County Near Rumsey from Colusa County Line to Cache creek Bridge and From 0.6 to 0.4 Mile West of Rumsey Canyon Bridge
Contract No. 03-3G0404

Owner: Caltrans

Bid Date: April 11th, 2024 @2:00 PM (ELECTRONIC BID)

DVBE Goal: 3%
SBE Goal: 5%

We are requesting quotes from all qualified DVBE/SBE Subcontractors and Suppliers but not limited to: AGGREGATES, ASPHALT, AC DIKES, AS OILS, CHIPSEAL/SLURRY SEAL, CONCRETE STRUCTURES, ASPHALT GRINDING, EROSION CONTROL, GEOTECH ENGINEERS, GUARDRAIL, LIME TREAT, SOILD REMEDIATION, STRIPING, SWPP PLAN ONLY, TRAFFIC CONTROL, TRUCKING.

Project Description:

The project includes, but not limited to, RHMA, partial depth recycling & replace AC surfacing.

Engineers Estimate: \$2,130,000

Plans and specs can be obtained at: <http://ppmoe.dot.ca.gov/des/oe/weekly-ads>

Or contact: estimating@mountaincascade.com

Please feel free to contact Mountain Cascade, Inc. at 925.373.8370 with any questions concerning bonding, insurance, lines of credit, and job overview. We look forward to your response.

Mountain Cascade Inc. is an Equal Opportunity Employer
California License # 422496

This is Part of a Good Faith Outreach. Your response is greatly appreciated



Mountain Cascade Inc.
555 Exchange Court, Livermore, CA 94550
(925) 373-8370, Fax (925) 373-0940

Project: Construction on State Highway in Amador County In and Near Lone at Various Locations
Contract No. 10-1Q7604

Owner: Caltrans

Bid Date: April 9th, 2024 @2:00 PM (ELECTRONIC BID)

DVBE Goal: 3%
SBE Goal: 5%

We are requesting quotes from all qualified DVBE/SBE Subcontractors and Suppliers but not limited to: AGGREGATES, ASPHALT, PRECAST MATERIALS, ASPHALT GRINDING, CHIPSEAL/SLURRY SEAL, CONSTRUCTION AREA SIGNS, ELECTRICAL-STREET LIGHTS/TRAFFIC SIGNALS/LOOPS, GEOTECH ENGINEERS, STRIPING, SWPP PLAN ONLY, TRAFFIC CONTROL, TRUCKING.

Project Description:

The project includes, but not limited to, cold plane asphalt concrete pavement and resurface with HMA & RHMA

Engineers Estimate: \$2,640,000

Plans and specs can be obtained at: <http://ppmoe.dot.ca.gov/des/oe/weekly-ads>

Or contact: estimating@mountaincascade.com

Please feel free to contact Mountain Cascade, Inc. at 925.373.8370 with any questions concerning bonding, insurance, lines of credit, and job overview. We look forward to your response.

Mountain Cascade Inc. is an Equal Opportunity Employer
California License # 422496

This is Part of a Good Faith Outreach. Your response is greatly appreciated



Mountain Cascade Inc.
555 Exchange Court, Livermore, CA 94550
(925) 373-8370, Fax (925) 373-0940

Project: The Improvements on Mabel Avenue from Santa Maria Avenue to Redwood Road -
Specification No. 2282

Owner: Alameda County Public Works Agency

Bid Date: April 16th, 2024 @ 2:00 PM

We are requesting quotes from all qualified WBE/MBE Subcontractors and Suppliers but not limited to:

AGGREGATES, ASPHALT, ADJUST MH/WV, ASPHALT GRINDING, CONCRETE FLATWORK, CONSTRUCTION AREA SIGNS, ELECTRICAL-STREET LIGHTS/TRAFFIC SIGNALS/LOOPS, ENVIRONMENTAL SERVICES, FENCING, GEOTECH ENGINEERS, LANDSCAPING/IRRIGATION, STRIPING, SURVEYING, SWPP PLAN ONLY, TRAFFIC CONTROL, TRUCKING.

Project Description:

The work includes but not limited to: new concrete curb, driveways, walkway conforms, sidewalks, install HMA conforms, cold plane existing asphalt, water meters and valves boxes, thermoplastic traffic stripe and pavement markings.

Engineers Estimate: \$1.1 million

Project information, including plans & specifications can be found by contacting:

<http://www.ipdservices.com/clients/eastbay?ALCO>

estimating@mountaincascade.com

Please feel free to contact Mountain Cascade, Inc. at 925.373.8370 with any questions concerning bonding, insurance, lines of credit, and job overview. We look forward to your response.

Mountain Cascade Inc. is an Equal Opportunity Employer
California License # 422496

This is Part of a Good Faith Outreach. Your response is greatly appreciated



CALIFORNIA SUB-BID REQUEST ADS



Mountain Cascade Inc.
555 Exchange Court, Livermore, CA 94550
(925) 373-8370, Fax (925) 373-0940

Project: Construction on State Highway in Sacramento County Near Antioch from 0.1 Mile North of Antioch Bridge to Sherman Island East Levee Road
Contract No. 03-3G0304

Owner: Caltrans

Bid Date: April 17th, 2024 @ 2:00 PM (ELECTRONIC BID)

DVBE Goal: 3%
SBE Goal: 5%

We are requesting quotes from all qualified DVBE/SBE Subcontractors and Suppliers but not limited to: AGGREGATES, ASPHALT, AC DIKES, ASPHALT GRINDING, CONSTRUCTION AREA SIGNS, ENVIRONMENTAL SERVICES, GEOTECH ENGINEERS, STRIPING, SURVEYING, SWPP PLAN ONLY, TRAFFIC CONTROL, TRUCKING.

Project Description:

The project includes, but not limited to, cold plane AC pavement, HMA, & RHMA.

Engineers Estimate: \$2,250,000

Project information, including plans & specifications can be found by contacting:

<http://ppmoe.dot.ca.gov/des/oe/weekly-ads> Or contact: estimating@mountaincascade.com

Please feel free to contact Mountain Cascade, Inc. at 925.373.8370 with any questions concerning bonding, insurance, lines of credit, and job overview. We look forward to your response.

Mountain Cascade Inc. is an Equal Opportunity Employer
California License # 422496

This is Part of a Good Faith Outreach. Your response is greatly appreciated



5225 Hellyer Avenue, Suite #220, San Jose, CA 95138
Phone (408) 574-1400 • Fax (408) 365-9548
Contact: Erik Cushman
Email: estimating@graniterock.com

REQUESTING SUB-QUOTES FROM QUALIFIED SBE & DVBE SUBCONTRACTORS/SUPPLIERS/TRUCKERS FOR:
Construction on State Highway in Yolo County Near Rumsey From Colusa County Line to Cache Creek Bridge and From 0.6 to 0.4 Mile West of Rumsey Canyon Bridge

Contract Number: 03-3G0404

Owner: Caltrans

Location: Rumsey, CA, HWY 16

Engineers' Estimate: \$2,130,000

BID DATE: April 11, 2024 @ 2:00 PM

Items of work include but are not limited to: **Lead Compliance Plan, Construction Area Signs, Traffic Control, Adjacent MBGR, PCMS, Water Pollution Control Program, Temporary Erosion Control, AC Dike, Tack Coat, Pavement & Object Markers, Signs, Striping and Trucking.**

Granite Rock Company 'Graniterock' is signatory to Operating Engineers, Laborers, Teamsters, Carpenters and Cement Masons unions. 100% performance and payment bonds will be required from a qualified surety company for the full amount of the subcontract price. Bonding assistance is available. Graniterock will pay bond premium up to 1.5%. In addition to bonding assistance, subcontractors are encouraged to contact Graniterock Estimating with questions regarding obtaining lines of credit, insurance, equipment, materials and/or supplies, or with any questions you may have. Subcontractors must possess a current contractor's license, DIR number, insurance and worker's compensation coverage. Subcontractors will be required to enter into our standard contract. Graniterock intends to work cooperatively with all qualified firms seeking work on this project.

We are an Equal Opportunity Employer



Mountain Cascade Inc.
555 Exchange Court, Livermore, CA 94550
(925) 373-8370, Fax (925) 373-0940

Project: Roadway, Water and Sewer Infrastructure Improvement Project

EDA No. 07-79-07487

Phase II Roadway Improvements

Engineers Estimate: \$3.4 MIL

DBE Goal: 19.8%

Owner: Mariposa County

Bid Date: Friday May 3rd, 2024 @ 2:00PM

We are requesting quotes from all qualified DBE Subcontractors and Suppliers but not limited to:

AGGREGATES, ASPHALT, CONCRETE MATERIAL, PIPE SUPPLIERS, PRECAST MATERIALS, AC DIKES, AC OILS, ASPHALT GRINDING, CONCRETE FLATWORK/PAVEMENT, CONSTRUCTION AREA SIGNS, DEMOLITION, ELECTRICAL-STREET LIGHTS/TRAFFIC SIGNALS/LOOPS, EROSION CONTROL, GUARDRAIL, HANDRAILING, MASONRY, SAWCUTTING, STRIPING, SURVEYING, TRAFFIC CONTROL, TRUCKING.

Project Description: The work consists of, in general, constructing storm drain, curb & gutter, sidewalk, grind & overlay road pavement, bridge deck rehabilitation, retaining walls, parking lot improvements.

Project information, including plans & specifications can be found by contacting:

estimating@mountaincascade.com

Please feel free to contact Mountain Cascade, Inc. at 925.373.8370 with any questions concerning bonding, insurance, lines of credit, and job overview. We look forward to your response.

Mountain Cascade Inc. is an Equal Opportunity Employer
California License # 422496

This is Part of a Good Faith Outreach. Your response is greatly appreciated



5225 Hellyer Avenue, Suite #220, San Jose, CA 95138
Phone (408) 574-1400 • Fax (408) 365-9548
Contact: David Kennedy
Email: estimating@graniterock.com

REQUESTING SUB-QUOTES FROM QUALIFIED SBE & DVBE SUBCONTRACTORS/SUPPLIERS/TRUCKERS FOR:
Construction on State Highway in Santa Clara County in San Jose Near West Virginia Street

Contract Number: 04-2W4504

Owner: Caltrans

Location: San Jose, CA, HWY 87

Engineers' Estimate: \$1,120,000

BID DATE: April 16, 2024 @ 2:00 PM

Items of work include but are not limited to: **Lead Compliance Plan, Traffic Control, PCMS, Water Pollution Control Program, Street Sweeping, Clearing & Grubbing, CIDH Concrete Piling, Minor Concrete, Rebar, Fence & Gate and Trucking.**

Granite Rock Company 'Graniterock' is signatory to Operating Engineers, Laborers, Teamsters, Carpenters and Cement Masons unions. 100% performance and payment bonds will be required from a qualified surety company for the full amount of the subcontract price. Bonding assistance is available. Graniterock will pay bond premium up to 1.5%. In addition to bonding assistance, subcontractors are encouraged to contact Graniterock Estimating with questions regarding obtaining lines of credit, insurance, equipment, materials and/or supplies, or with any questions you may have. Subcontractors must possess a current contractor's license, DIR number, insurance and worker's compensation coverage. Subcontractors will be required to enter into our standard contract. Graniterock intends to work cooperatively with all qualified firms seeking work on this project.

We are an Equal Opportunity Employer



Mountain Cascade Inc.
555 Exchange Court, Livermore, CA 94550
(925) 373-8370, Fax (925) 373-0940

Project: Walnut Ranch Unit I, II and III Water Line Improvement Project

Sanitary Sewer Improvement Project

Engineers Estimate: \$4 MIL

DBE Goal: 24%

Owner: City of Colusa

Bid Date: April 30th, 2024 @ 2:00PM

We are requesting quotes from all qualified DBE Subcontractors and Suppliers but not limited to:

AGGREGATES, ASPHALT, CONCRETE MATERIAL, LOW DENSITY CELLULAR GROUT, PIPE SUPPLIERS, AC OILS, ASPHALT GRINDING/PAVING/STAMPED, CONCRETE FLATWORK/STRUCTURES, CONSTRUCTION AREA SIGNS, SAWCUTTING, STRIPING, SURVEYING, SWPPP, TRAFFIC CONTROL, TRUCKING, VALVES/METERS.

Project Description: The work consists of, in general, removal of existing water supply well, abandoning existing water piping, installation of new water mains, services, fire hydrants, valves and meter boxes, boxes and service tie-ins.

Project information, including plans & specifications can be found by contacting:

estimating@mountaincascade.com

Please feel free to contact Mountain Cascade, Inc. at 925.373.8370 with any questions concerning bonding, insurance, lines of credit, and job overview. We look forward to your response.

Mountain Cascade Inc. is an Equal Opportunity Employer
California License # 422496

This is Part of a Good Faith Outreach. Your response is greatly appreciated



5225 Hellyer Avenue, Suite #220, San Jose, CA 95138
Phone (408) 574-1400 • Fax (408) 365-9548
Contact: Erik Cushman
Email: estimating@graniterock.com

REQUESTING SUB-QUOTES FROM QUALIFIED SBE & DVBE SUBCONTRACTORS/SUPPLIERS/TRUCKERS FOR:
Construction on State Highway in Yolo County in and near Esparto from Road 82B to 0.3 Mile West of Capay Canal Bridge and from 0.3 Mile East of Capay Canal Bridge to 0.3 Mile East of Road 86A

Contract Number: 03-3G0504

Owner: Caltrans

Location: Esparto, CA, HWY 16

Engineers' Estimate: \$2,840,000

BID DATE: April 18, 2024 @ 2:00 PM

Items of work include but are not limited to: **Lead Compliance Plan, Construction Area Signs, Traffic Control, PCMS, Water Pollution Control Program, Temporary Erosion Control, Tack Coat, Minor Concrete, Pavement Markers, Signs, Striping, Guardrail, Crash Cushions, Rumble Strip and Trucking.**

Granite Rock Company 'Graniterock' is signatory to Operating Engineers, Laborers, Teamsters, Carpenters and Cement Masons unions. 100% performance and payment bonds will be required from a qualified surety company for the full amount of the subcontract price. Bonding assistance is available. Graniterock will pay bond premium up to 1.5%. In addition to bonding assistance, subcontractors are encouraged to contact Graniterock Estimating with questions regarding obtaining lines of credit, insurance, equipment, materials and/or supplies, or with any questions you may have. Subcontractors must possess a current contractor's license, DIR number, insurance and worker's compensation coverage. Subcontractors will be required to enter into our standard contract. Graniterock intends to work cooperatively with all qualified firms seeking work on this project.

We are an Equal Opportunity Employer



CALIFORNIA SUB-BID REQUEST ADS

Sub-Bids Requested from qualified MBE/WBE/SBE/DVBE Subcontractors and Suppliers for:

**PIPELINE 5 RELINING SAN LUIS REY CANYON
SPECIFICATION 663**

Owner: San Diego County Water Authority
Location: San Diego County, CA
Bid Date: April 23, 2024 @ 2:00 P.M.



667 Brea Canyon Road, Suite 30 • Walnut, CA 91789
Phone: (909) 595-4397, Fax: (909) 444-4268
Contact: Lori Olivas, lori.olivas@jfshea.com

J.F. Shea Construction, Inc. is soliciting your participation in the preparation of this bid. We are particularly interested in bids from subcontractors/suppliers for the following work items: **Fencing, Revegetation, Ready-Mix Concrete, Reinforcing Steel, Precast Concrete Vaults, Structural Steel, Miscellaneous Metals, Waterproofing, Painting and Coatings, and Cathodic Protection**

Plans and Specifications: Email your request to elizabeth.pettus@jfshea.com. Plans may also be viewed at our Walnut Office. J.F. Shea Construction, Inc. is an equal opportunity employer and intends to negotiate in good faith with interested MBE/WBE/SBE/DVBE firms and intends to utilize the lowest responsive bidder. J.F. Shea expects potential subcontractors to be bondable. J.F. Shea will pay for up to 1% for subcontractor bond costs. Subcontractors and Suppliers are expected to bid per plans and specifications, including requirements for warranties. Standard manufacturer's warranties, if not in conformance with owner's specifications, will not be accepted.

Sub-Bids Requested from qualified MBE/WBE/SBE/DVBE/DBE Subconsultants/Subcontractors for:

**PROGRESSIVE DESIGN-BUILD SERVICES FOR THE DONALD C. TILLMAN
ADVANCED WATER EQUALIZATION BASINS RFP**

Owner: City of Los Angeles Bureau of Sanitation
Location: Van Nuys, CA
Bid Date: May 6, 2024 @ 2:00 P.M.



667 Brea Canyon Road, Suite 30 • Walnut, CA 91789
Phone: (909) 595-4397, Fax: (909) 444-4268
Contact: Lori Olivas, lori.olivas@jfshea.com

J.F. Shea Construction, Inc. is soliciting your participation in the preparation of this proposal. We are particularly interested in bids from subconsultants/subcontractors for the following work items: **Geotechnical Engineering, Driller, Surveyor, Landscape Architect, Pothole Company, Water Quality Testing, Air Quality Testing**

Plans and Specifications: Project documents may be obtained from: www.rampla.org. Plans may also be viewed at our Walnut Office. J.F. Shea Construction, Inc. is an equal opportunity employer and intends to negotiate in good faith with interested MBE/WBE/SBE/DVBE/DBE firms and intends to utilize the lowest responsive bidder. J.F. Shea expects potential subconsultants/subcontractors to be bondable. J.F. Shea will pay for up to 1% for subcontractor bond costs. Subcontractors, suppliers, and subconsultants are expected to bid per plans and specifications, including requirements for warranties. Standard manufacturer's warranties, if not in conformance with owner's specifications, will not be accepted.

Keep Going: A Plan for Ensuring Business Continuity

[Article originally appeared in
www.constructionexec.com]

By Christopher Durso

The day before Construction Executive's interview with Colby Whitfield, AT&T preemptively proved his point. We were scheduled to talk to Whitfield, assistant vice president of risk control at Travelers, on Feb. 23 about the importance of planning for business continuity—maintaining a company's daily operations and long-time viability in the face of unforeseen disruptive events, naturally occurring and otherwise.

On Feb. 22, AT&T's cellphone network experienced a 12-hour outage, leaving tens of thousands of people across the country unable to make calls, send texts or access the internet. When CE spoke with Whitfield the following day, he immediately connected the event to the construction industry. "Just think about how that type of event could have a significant impact on contractors," he says, "who have become more reliant on internet connectivity to do their work."

In our interview, Whitfield discussed how business continuity is connected to disaster preparedness and succession planning, what functions it encompasses and why it's important for every company regardless of size.

What exactly does business continuity mean for a construction company?

At its essence, business continuity is planning for those worst-case scenarios that can impact a contractor's ability to operate, whether that be in the short term, operationally, or in their long-term viability as a company. We see it encompassing a few distinct areas. It starts with assessing all of a company's potential vulnerabilities and then working to prevent or reduce the impacts of any type of resulting business interrup-

tion or loss that might occur—and then, any type of activity to recover and resume operations as quickly as possible following an event.

All those fall within the umbrella of business continuity.

Is this related to things like disaster planning or succession planning, or is business continuity something completely separate and different?

They're certainly related. When I think about succession planning, you're focusing on identifying and developing future leaders—those needed to fill various roles and ensure a smooth transition. Disaster preparedness is more responding to those specific catastrophic events like natural disasters or cyberattacks.

Business continuity, on the other hand, encompasses a much broader range of strategies to ensure overall operational resilience in the face of various disruptions. Those could result from a wide variety of exposures. It could be a natural hazard, a manmade event or a technological event. It's really important that you include all the risks that can have a significant impact on a contractor's ability to operate within a business-continuity plan.

Does each of those hazards have its own distinct relationship with business continuity?

We think about natural hazards a lot with business continuity. Depending on their location, a contractor may be more impacted by hurricanes if they're in the Southeast, or wildfires in the West, or freezing weather if they're in the North—or even now in the South. We're seeing more about non-weather-related fire and water losses that can impact a project during construction, or the availability of materials due to supply-chain disruptions.

And then, technological events are things we're seeing more and more of.

Think about the increasing prevalence of cyberattacks. Earlier this week, we saw a widespread outage of internet and cellphone service in parts of the U.S. Just think about how that type of event could have a significant impact on contractors who have become more reliant on internet connectivity to do their work—with building information modeling or just simple communication with others on the construction team. If you don't have that connectivity, it becomes really critical.

Is the idea of business continuity to keep the business running so your people's day-to-day work isn't interrupted, or is the ultimate goal to keep the business solvent in the long term?

It's planning for both those things.

From a day-to-day perspective, how are we going to keep the lights on? And then, are we going to be a company that can make it the next year, five years, 20 years into the future?

For construction companies, is this something that is focused mostly on the back-office level, or does it also apply to individual jobsites?

When you think about the disruptions that could happen, they're going to have a significant impact on project timelines budgets, client satisfaction—business continuity impacts all levels of a construction company, from executive leadership down to the jobsite personnel.

Office functions like finance, procurement and administration certainly play an important role in developing the business-continuity plan, but field leaders and site workers play an equally



critical role in helping implement that plan and evaluating its effectiveness.

What areas should a company focus on when it comes to ensuring business continuity?

It always starts with conducting a comprehensive risk assessment of all the potential disruptive events, threats and vulnerabilities to an organization. So, identifying those internal/external factors that could disrupt an organization—natural disasters, supply-chain disruptions, cybertheft, regulatory changes—and assessing their potential impact to a company's operations, assets, employees and reputation.

Following closely behind, once you identify those risks, it's important to implement strategies to mitigate them and ensure that the organization is resilient in the face of those disruptions. Think about things like developing emergency-response plans that would kick in in the event of some type of disruption, establishing backup systems and redundancies, as well as providing training for employees who are going to implement the program.

Visit the link for the full article:

www.constructionexec.com/article/keep-going

PUBLIC LEGAL NOTICE ADVERTISEMENTS

OFFICE OF COMMUNITY INVESTMENT AND INFRASTRUCTURE (OCII)

Request for Proposals CFD 1 Plaza and Streetscape Maintenance

OCII has released a Request for Proposals for Plaza and Streetscape Maintenance Services in CFD No. 1, located in the South Beach area of San Francisco. To download the RFP, see: [OCII RFP CFD1 Plaza and Streetscape Maintenance Services](#). Local Small Business Enterprises (SBEs) are encouraged to apply. A virtual pre-submittal meeting will be held on 3/20/2024, 10:00 AM. A Site Tour will be held on 3/22/2024, 11:00 AM. Proposals are due on 4/22/2024, not later than 5:00 PM. For questions, please contact Marie Munson at 415-749-2415 or marie.munson@sfgov.org

UNIVERSITY OF CALIFORNIA, IRVINE MEDICAL CENTER

NOTICE INVITING GENERAL CONTRACTOR PREQUALIFICATION

Prequalification Questionnaires will be received by the University of California, Irvine Medical Center (UCIMC) from general contractors wishing to submit bids for a lump sum contract for the:

- Project #1: B1, Bsmt, 3T MRI Replacement
- Project #2: B1, Bsmt, 1.5T MRI Replacement

PREQUALIFICATION: The University has determined that bidders must be prequalified for these projects.

DESCRIPTION OF WORK:

Project #1: B1, Bsmt, 3T MRI Replacement – Reconfigure the existing recovery space in the basement of the Douglas Hospital to a MRI Suite to include a MRI Room, Control Room and Equipment room and equipped with a Siemens Vida 3T MRI. Scope includes renovation of ~1,200 SF for a new MRI room, shielding, concrete work, finishes, utility upgrades, and outside chiller pad and screening.

- **Estimated Cost:** \$2,500,000
- **Project Completion Time:** 180 Calendar Days

Project #2: B1, Bsmt, 1.5 T MRI Replacement - Replace the Philips 3T MRI with a Siemens Altera 1.5T MRI. Scope includes renovation of ~910 SF of the existing MRI room; shielding, concrete work, finishes, and utility upgrades.

- **Estimated Cost:** \$750,000
- **Project Completion Time:** 100 Calendar Days

PROCEDURES: Prequalification Questionnaires available **Wednesday, March 20, 2024, 4:00 PM.** Contact Kim Kerwin @ khau@hs.uci.edu or Maryann Gonzales @ maryag1@hs.uci.edu

QUESTIONNAIRE DUE DATE: Questionnaires must be received by **Wednesday, April 10, 2024 at 2:00 PM** only at UCIMC, Planning, Design & Construction, Building 27, Room 136, 101 The City Drive South, Orange, CA 92868.

GENERAL CONTRACTOR QUALIFICATIONS: Must have a current and active California CSLB "A" General Engineering or "B" General Building Contractor's license, insurance, bonding, safety, financial and claims history requirements. Must have completed a minimum of (3) projects in the last 5 years that meet all the criteria listed below and demonstrate the Contractor's ability to successfully complete the project with respect to project size, scope, cost, use, complexity, etc.:

1. Completed (1) OSHPD-1 Interior renovation in an occupied space of at least 2,000 SF with daytime work, infection control requirements & minimum construction of \$1,000,000.
2. Completed (1) OSHPD-1 Imaging project at least 1,000 SF with a minimum construction of \$750,000.
3. Completed (1) MRI renovation project that included the management of electrical, shielding, plumbing and/or HVAC subcontractors at least 2,000 SF with a minimum construction of \$1,000,000.

Bidders not meeting the requirements of the prequalification questionnaire will not be eligible to bid.

Prequalification is solely for the purpose of determining bidders who are deemed capable of successful performance of the type of work included in this project. A contract will be awarded to the prequalified bidder submitting the lowest responsive bid.

The University reserves the right to reject any or all responses to this notice, to waive non-material irregularities, and to deem Contractors prequalified to submit proposals for the project. To prequalify, Contractors must agree to comply with all bid conditions including state prevailing wages, 10% bid bond, 100% payment and performance bonds, and insurance requirements. All information submitted for prequalification evaluation will be considered official information acquired in confidence, and the University will maintain its confidentiality to the extent permitted by law.

Every effort will be made to ensure that all persons have equal access to contracts and other business opportunities with the University within the limits imposed by law or University policy. Each Proposer may be required to show evidence of its equal employment opportunity policy.

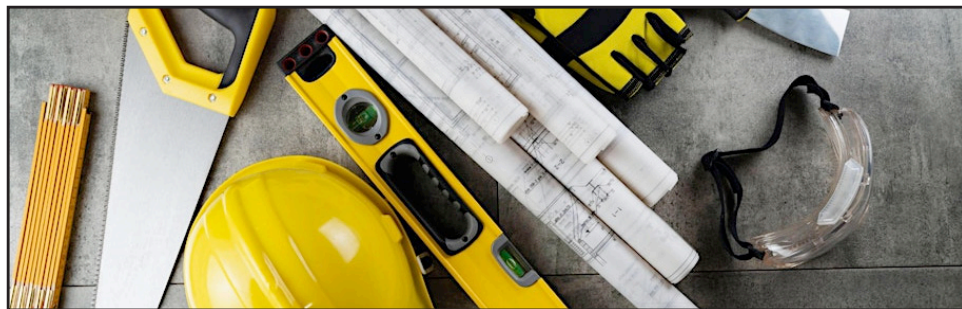
No contractor or subcontractor, regardless of tier, may be listed on a Bid for, or engage in the performance of, any portion of this project, unless registered with the Department of Industrial Relations pursuant to Labor Code section 1725.5 and 1771.1.

This project is subject to compliance monitoring and enforcement by the Department of Industrial Relations.

The successful Bidder shall pay all persons providing construction services and/or any labor on site, including any University location, no less than the UC Fair Wage (defined as \$15 per hour) and shall comply with all applicable federal, state and local working condition requirements.

THE REGENTS OF THE UNIVERSITY OF CALIFORNIA
March 14, 2024

EVENTS



Construction Referral Partners Networking Event

Date and time: Thursday, April 11 · 5 - 7pm PDT
Location: Priority Doors & Windows
8185 Camino Santa Fe San Diego, CA 92121

About this event

Get ready to elevate your networking game to new heights! You're invited to join us for an exhilarating evening of connections, collaborations, and camaraderie at our exclusive Construction Referral Partners Networking Event!

Prepare to be enchanted as you step into the luxurious realm of Priority Doors & Windows showroom that exudes elegance and innovation.

But that's not all! Indulge your taste buds with delectable snacks and refreshing drinks as you mingle with industry professionals, architects, contractors, suppliers, and experts in the construction field. Whether you're seeking new opportunities, partnerships, or simply aiming to expand your network, this event promises to be the ideal platform to make it happen.

Register here: bit.ly/49pqTnN

CMAA SOUTHERN CALIFORNIA CHAPTER

OWNERS VIRTUAL EVENT

CONSTRUCTION MARKET ANALYSIS

TUESDAY APRIL 23, 2024 12:00 PM - 1:00 PM

\$55 - CMAA MEMBERS
\$85 - NON-MEMBERS
OWNERS AND STUDENT MEMBERS FREE

SPONSORSHIPS AVAILABLE

PROGRAM SUMMARY

This program will present the findings of a regional construction market analysis commissioned by LA Metro with information on regional capital spend; market and economic forces and trends impacting Owners including the rising costs of labor and materials; Contractor feedback on the current bidding environment, and ideas on how to better be an Owner of choice.

SPONSORSHIP LEVELS

- \$750 - Platinum - Includes 4 Tickets
- \$500 - Gold - Includes 3 Tickets
- \$250 - Silver - Includes 2 Tickets

EMCEE

Farrah Farzaneh, CCM, Assoc. DBIA, LEED AP, BDC, ENV SP
Director of Facilities Planning, Emergency Management & Construction
San Bernardino Community College District

MODERATOR

Julie Owen, DIF(ICEC) F(GPC)
Senior Executive Officer, Project Management Oversight
Los Angeles Metro

SPEAKERS

- Judy Johnson
Vice President
Jacobs
- Tim McKay
Sr. Program Manager
Jacobs
- Chris Serroels
Sr. Project Manager
Jacobs

With Small Business Exchange



- Advertise your**
- Sub-Bid Request Ads
 - Public Legal Notices
 - Fictitious Business Name Statement (also known as a DBA Statement)
 - Job Listings (Classified ad)
 - Upcoming events or seminars



- You Can find:**
- Subcontractors
 - Vendors
 - Suppliers



You can reach a Diverse Audience

REGISTER HERE

CMAA SoCal Chapter | www.cmaasc.org/events